

Accommodation

Kindly complete and return by: **10th May 2019**



All in CARAVANING 2019

14 – 16 June 2019

Beijing Etrong International Exhibition & Convention Center



Messe Düsseldorf (Shanghai) Co., Ltd.

Contact: Ms. Mona Zhou

Tel.: +86(0)21-6169 8324

Fax: +86(0)21-6169 8301

Email: mona.zhou@mds.cn

Price/room/night--including service charge

1. Pullman Beijing South (5 Star) - Distance from Hotel to Venue 2km (<http://www.accorhotels.com>)

Superior King Room RMB 650 (incl. 1 breakfast)

Superior Twin Room RMB 710 (incl. 2 breakfast)

Executive King Room RMB 850 (incl. breakfast)

2. Holiday Inn Express Beijing Yizhuang (4 Star) - Distance from Hotel to Venue 2km (<http://www.ihg.com>)

Standard King Room RMB 500 (incl. breakfast)

Standard Twin Room RMB 500 (incl. breakfast)

3. Zhong ji Subaru Hotel (3 Star) - Distance from Hotel to Venue 2km

Standard Twin Room RMB 350 (incl. breakfast)

4. Intercontinental Beijing Sanlitun (5 Star) - Distance from Hotel to Venue 25km (<http://www.ihg.com>)

Deluxe King Room RMB 1,500 (incl. breakfast)

Deluxe Twin Room RMB 1,500 (incl. breakfast)

Company name			Booth No.	
Hotel Choice	No. & Type of Rooms			
Guests name	1. _____	2. _____	3. _____	
Check-in/out date	2019 June ____	2019 June ____	Total: ____ night(s)	
Information of credit card	Type:	Holder's Name:		
	Number:	Expiry Date:		
Contact information	Tel:	Mobile:		
	Fax:	E-mail:		

Remarks:

- All hotel bookings are subject to availability. Please submit your Reservation Form to the organizer on or before May 10th, 2019 should you wish to make your hotel reservation. Reservation made after the deadline can't be guaranteed.
- All booking need be guarantee by the credit card. Please fill in the credit information for booking the hotel.
- If you choose **Holiday Inn Express Beijing Yizhuang**, please transfer full payment to the hotel before 14 days of arrival.
- Cancellation must be made in writing and 7 days prior to arrival. 3 days' advance notice is required to modify a confirmed reservation. Late cancellations will cause a penalty of one night of room charge.

Signature / Seal:

Accommodation

Kindly complete and return by: **10th May 2019**



All in CARAVANING 2019

14 – 16 June 2019

Beijing Etrong International Exhibition & Convention Center



Messe Düsseldorf (Shanghai) Co., Ltd.

Contact: Ms. Mona Zhou

Tel.: +86(0)21-6169 8324

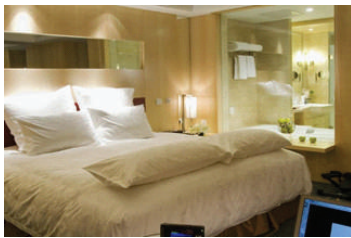
Fax: +86(0)21-6169 8301

Email: mona.zhou@mds.cn

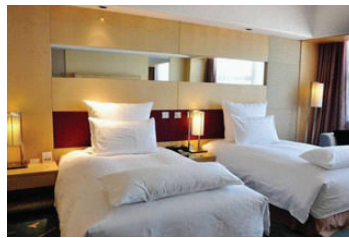
Price/room/night--including service charge

1. Pullman Beijing South (5 Star) - Distance from Hotel to Venue 2km (<http://www.accorhotels.com>)

Superior King Room RMB 650 (incl. 1 breakfast)



Superior Twin Room RMB 710 (incl. 2 breakfast)

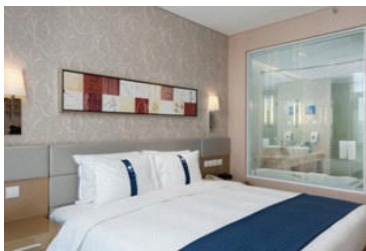


Executive King Room RMB 850 (incl. breakfast)

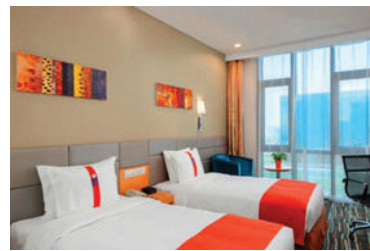


2. Holiday Inn Express Beijing Yizhuang (4 Star) - Distance from Hotel to Venue 2km (<http://www.ihg.com>)

Standard King Room RMB 500 (incl. breakfast)

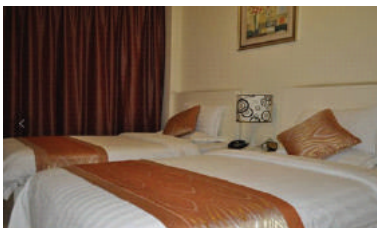


Standard Twin Room RMB 500 (incl. breakfast)



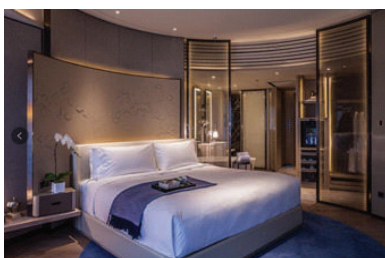
3. Zhong ji Subaru Hotel (3 Star) - Distance from Hotel to Venue 2km

Standard Twin Room RMB 350 (incl. breakfast)



4. Intercontinental Beijing Sanlitun (5 Star) - Distance from Hotel to Venue 25km (<http://www.ihg.com>)

Deluxe King Room RMB 1,500 (incl. breakfast)



Deluxe Twin Room RMB 1,500 (incl. breakfast)

